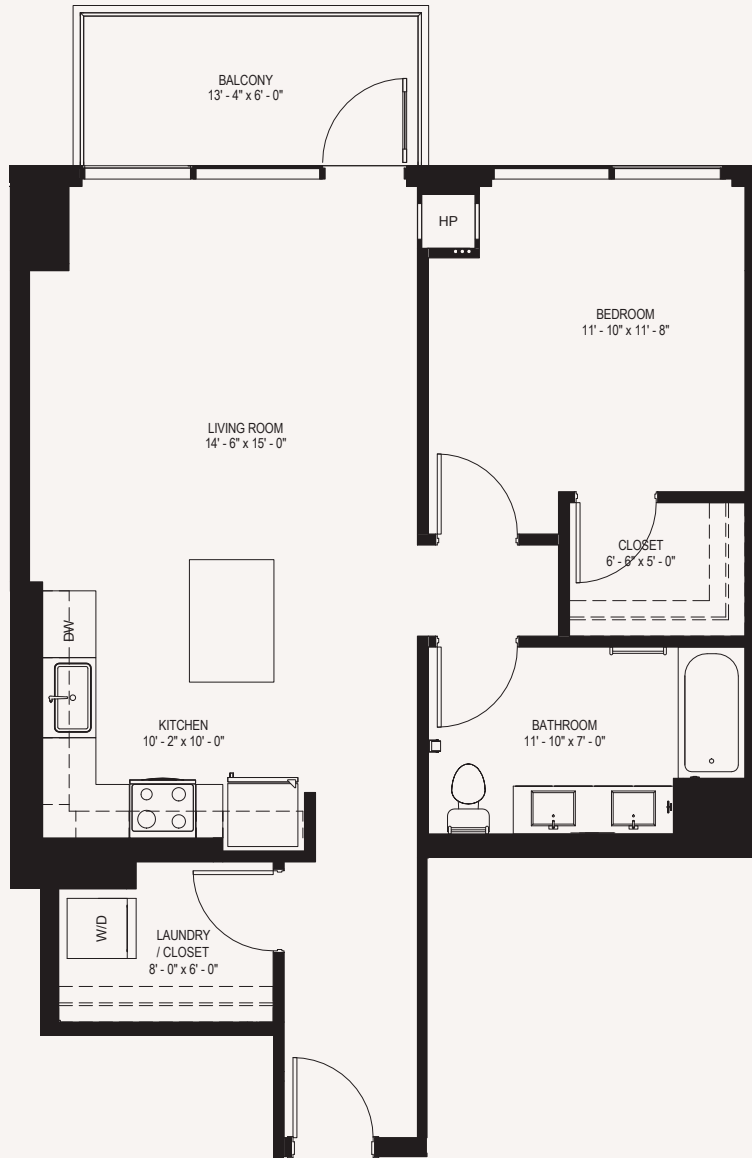


NICHE 905

PLAN 1B

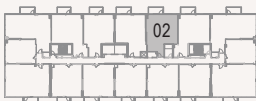
1 BED 1 BATH 834 SQ FT



KEY PLAN

N»

Floors 6-17



* unique to this plan

Plans, views, dimensions and details subject to change. All dimensions are approximate.

APARTMENT HIGHLIGHTS

- Large walk-in laundry room*
- Walk in closet*
- Island with breakfast bar*
- Large balcony with amazing city views*
- Thoughtfully designed floorplans
- Contemporary cabinetry with soft-close doors and drawers and built-in wine racks
- Stainless steel appliances with ice maker and gas range
- Dishwasher and microwave
- Quartz kitchen countertops with glass tile backsplashes
- Luxurious porcelain tiled bathroom with dual vanity sinks*
- Washer and dryer
- Luxury plank flooring throughout
- Floor to ceiling windows
- Individually controlled heating and cooling
- Roller shade window treatments

BUILDING FEATURES

- Rooftop pool and spa
- Outdoor bar and grilling stations
- Skydeck lounge with large fire-pit
- Amazing 360° city views
- Fitness center & yoga studio
- Fully equipped business center with conference room
- Wi-Fi in common areas
- Complimentary coffee bar
- Spacious entertainment room
- 24/7 Front desk concierge
- On-site dog run and pet grooming area
- Community garden
- Bike workshop and 110-bike storage area
- LEED certification
- Indoor parking
- Gigabit internet ready

